

LIGHTING
MANAGEMENT
SYSTEM



IQSENSOR.100

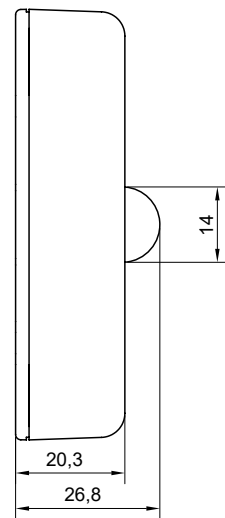
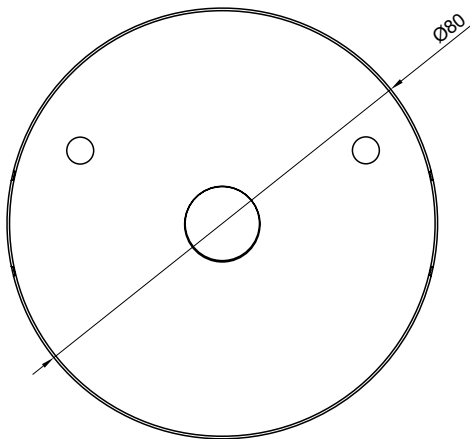
Motion, presence and light sensor

IQSENSOR.100 is a multisensor combining the functionality of a motion, presence and light sensor. Designed for use in rooms and passageways. The advanced light sensor used in the device helps minimise electricity costs while maintaining maximum user comfort.

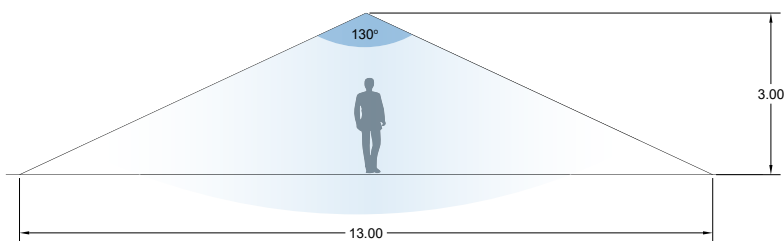
technical parameters:

Supply voltage	9.5 ÷ 22.5 VDC (via DALI bus)
Current draw	2 mA
Data protocol	DALI-2
Terminals	spring terminals, cable 1.5 mm ²
Assembly	surface-mounted
Enclosure dimensions	Ø80 x 20,3 [mm]
Enclosure material	self-extinguishing ABS + PC
Operating temperature	from 0° to +50°C
Storage temperature	from -20° to +50°C
Relative humidity	5 ÷ 90%, non-condensing
Weight	57 g
IP rating	IP20
Operating range of the presence detector	at 2.5 m height - 3 m diameter area
Operating range of the motion detector	as per drawings

Part Number	Specyfication
C-LMSH3A107-1D-NW	detection range up to 4.1m, white
C-LMSH3A107-1D-NB	detection range up to 4.1m, black
C-LMSH3A130-1D-NW	detection range up to 5.9m, white
C-LMSH3A130-1D-NB	detection range up to 5.9m, black



C-LMSH3A130-1D-NW
C-LMSH3A130-1D-NB



C-LMSH3A107-1D-NW
C-LMSH3A107-1D-NB

